

RdB/CUB

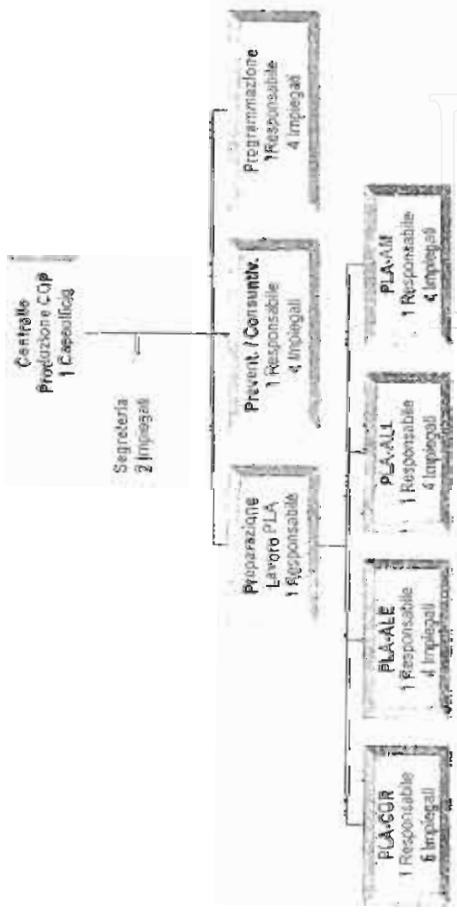
Coordinamento Nazionale

Difesa

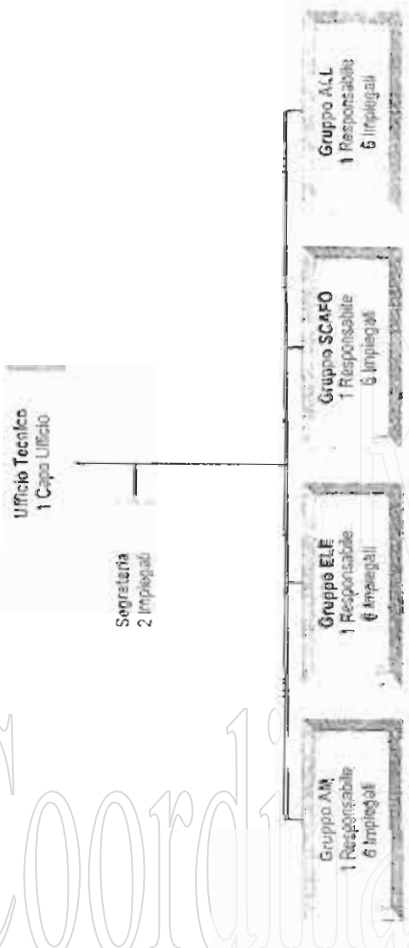
**MODELLO A 35 UNITA'**



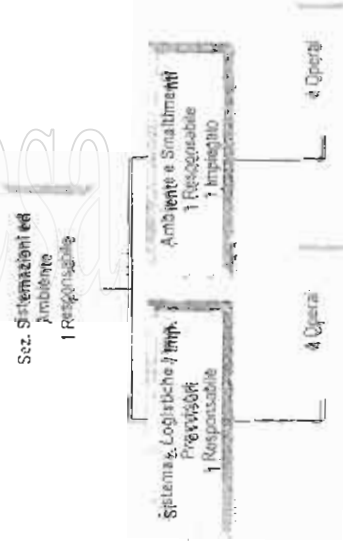
### UFFICIO COP



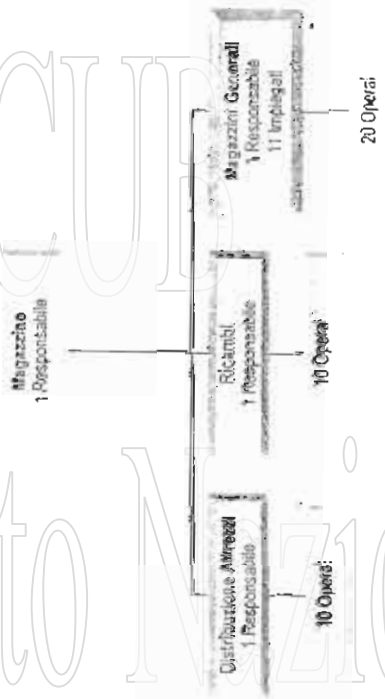
### UFFICIO TECNICO



### SEZ. SISTEMAZIONI ED AMBIENTE



### MAGAZZINO



W



A.E.	Allestimento Elettrico
A.L.	Allestimento
AM	Apparato Motore
ASS.	Assistenza
COR.	Coordinamento
ELE.	Elettrico
FAM.	Fuori Apparato Motore
PLA.	Programmazione Lavori

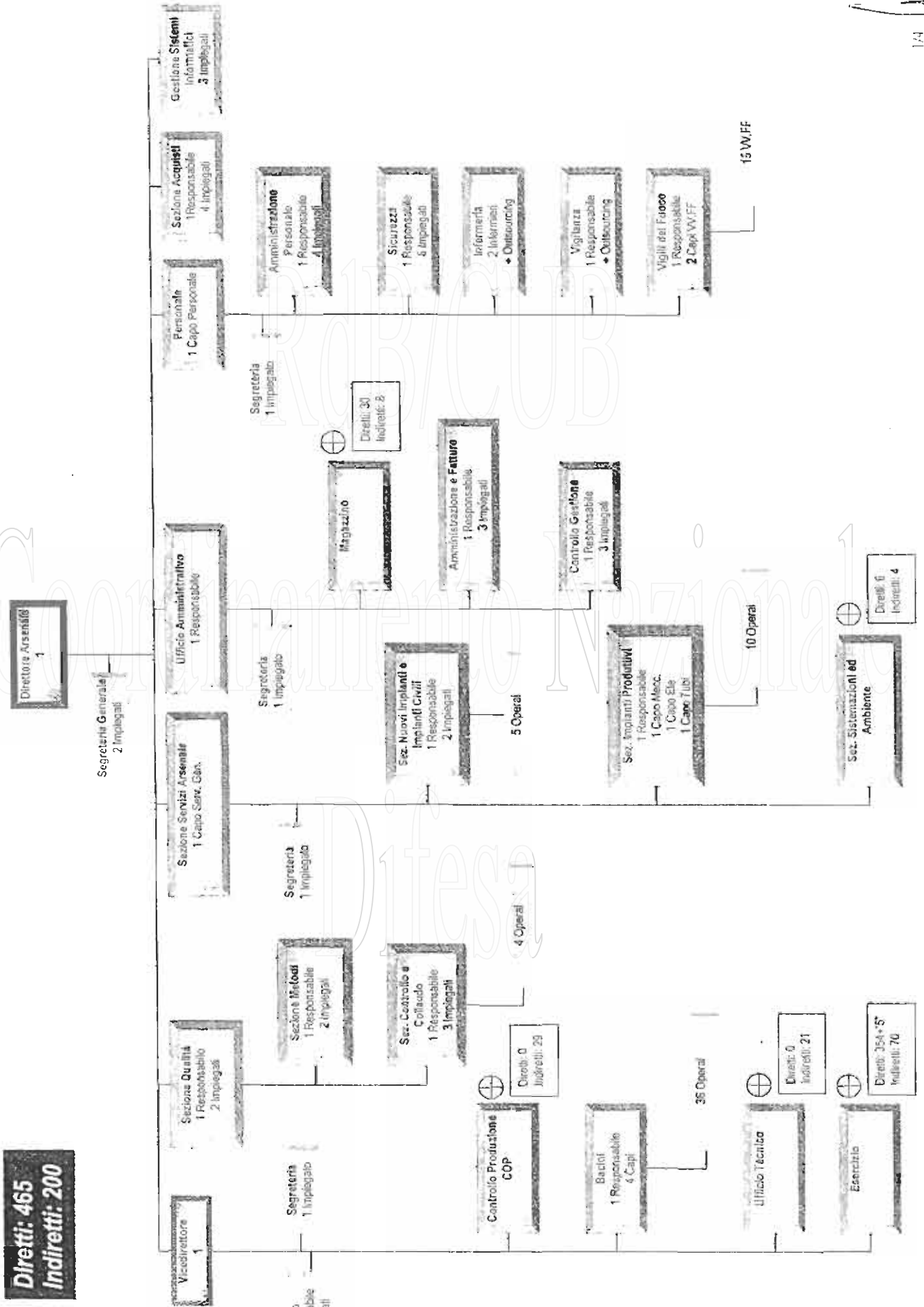
RdB/CUB

Coordinamento Nazionale

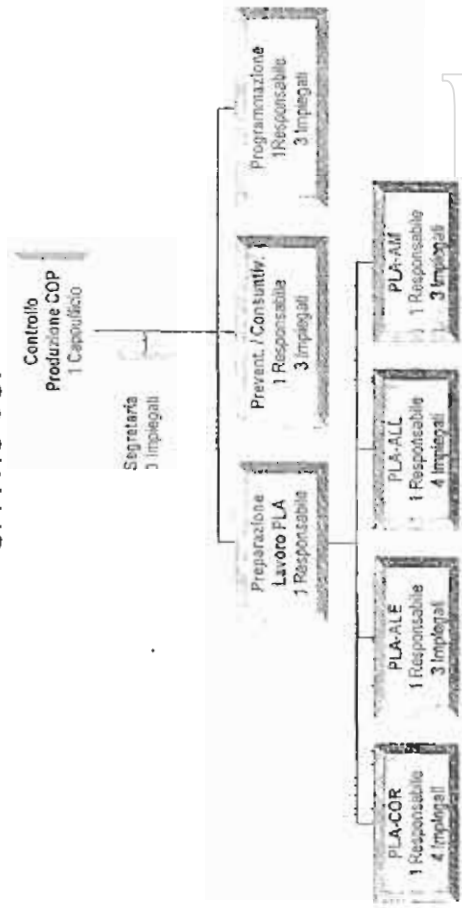
Difesa

# ORGANIGRAMMA ARSENALE DI LA SPEZIA

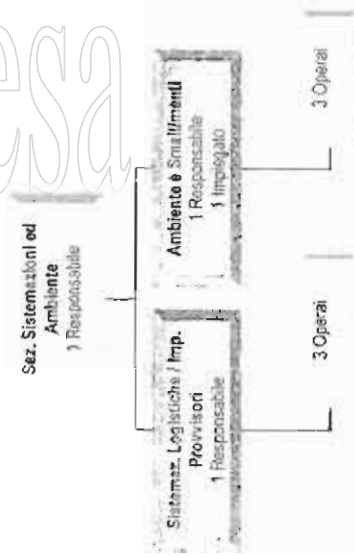
**Diretti: 465**  
**Indiretti: 200**



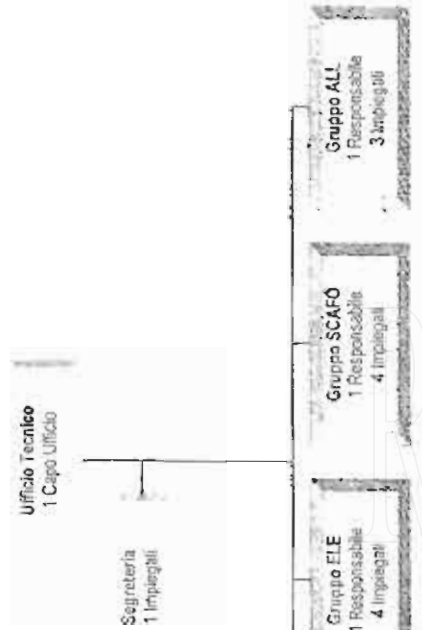
### UFFICIO COP



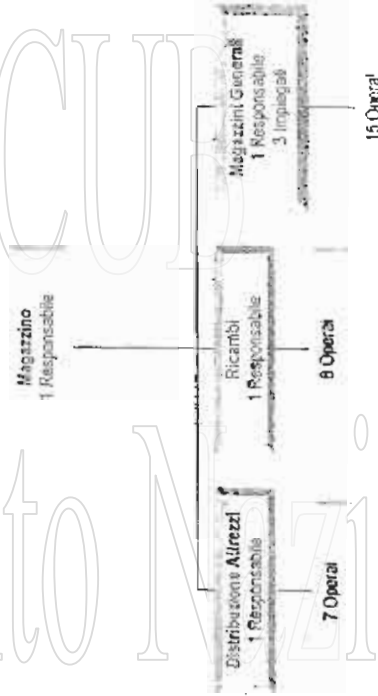
### SEZ. SISTEMAZIONI ED AMBIENTE



### UFFICIO TECNICO

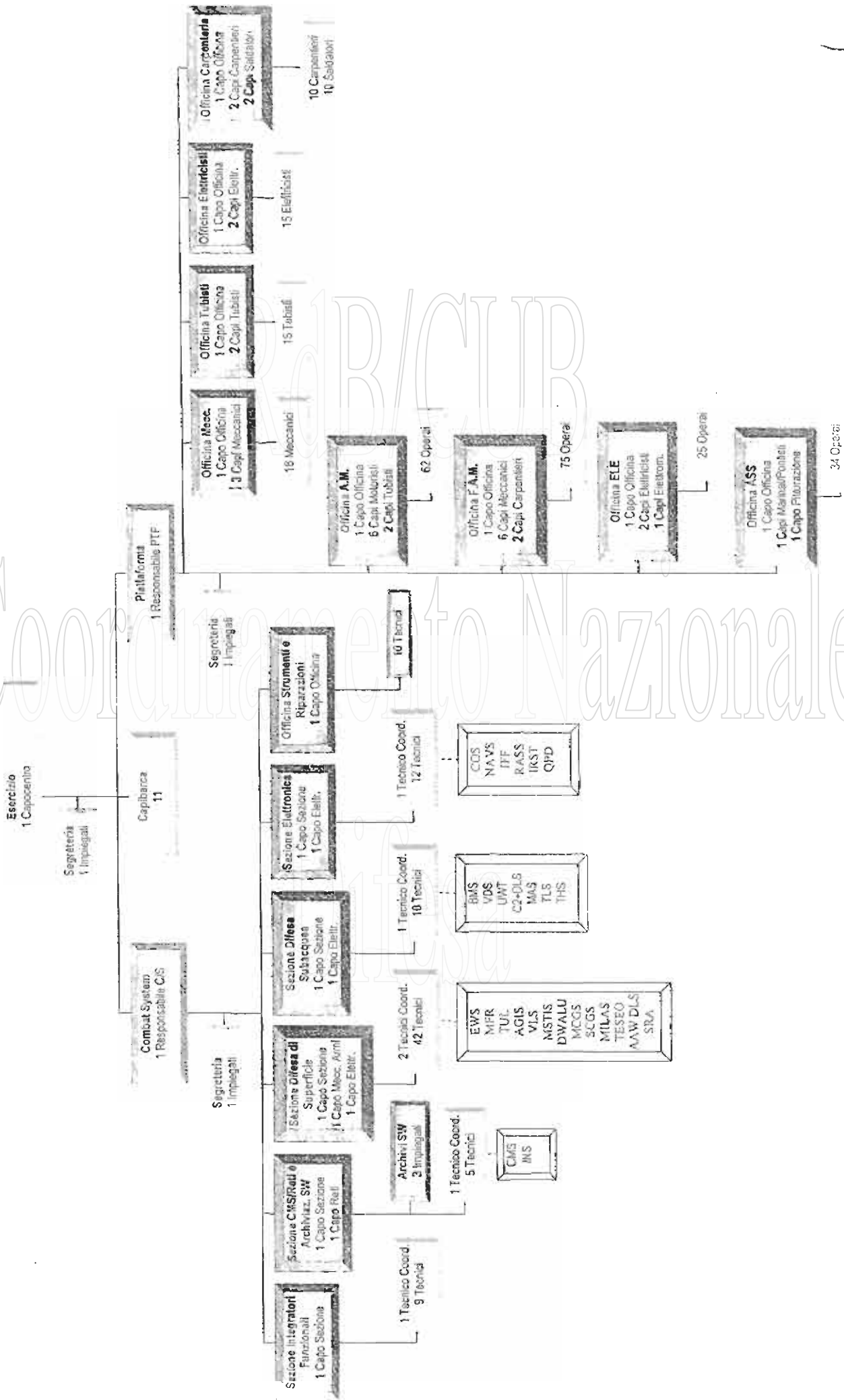


### MAGAZZINO



2/4

SEZIONE ESERCIZIO



*[Handwritten signature]*



**CRONIMI**

AL.E.	Allestimento Elettrico
AL.I.	Allestimento
AM	Apparato Motore
ASS	Assistenza
COR	Coordinamento
ELE	Elettrico
FAM	Fuori Apparato Motore
PLA	Programmazione Lavori

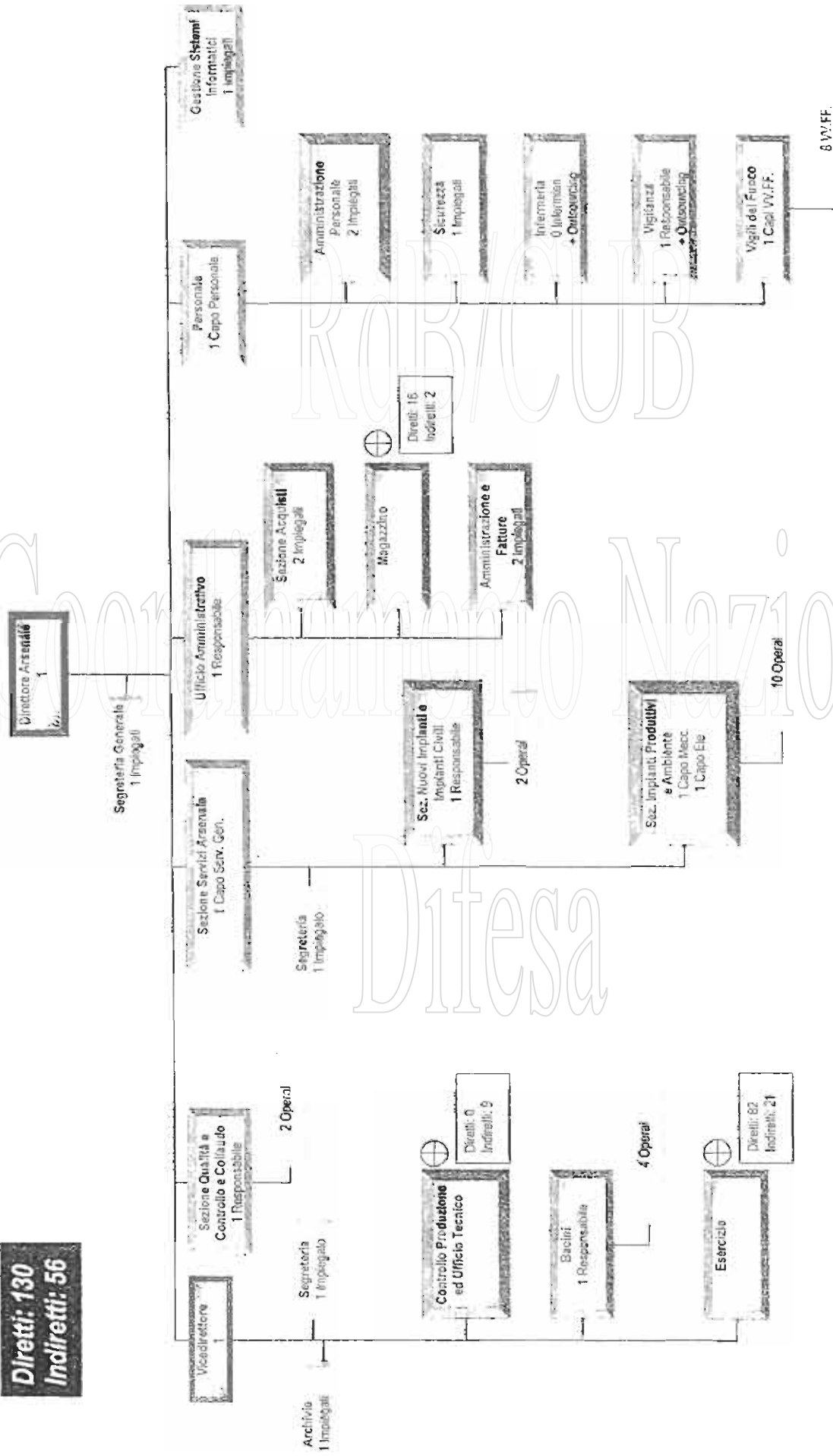
RdB/CUB

Coordinamento Nazionale

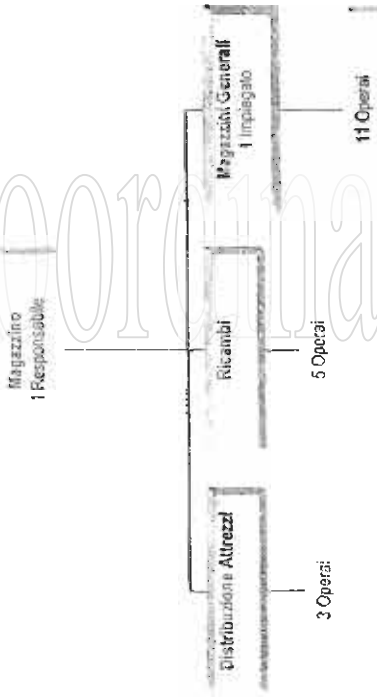
Difesa

# ORGANIGRAMMA ARSENALE DI AUGUSTA

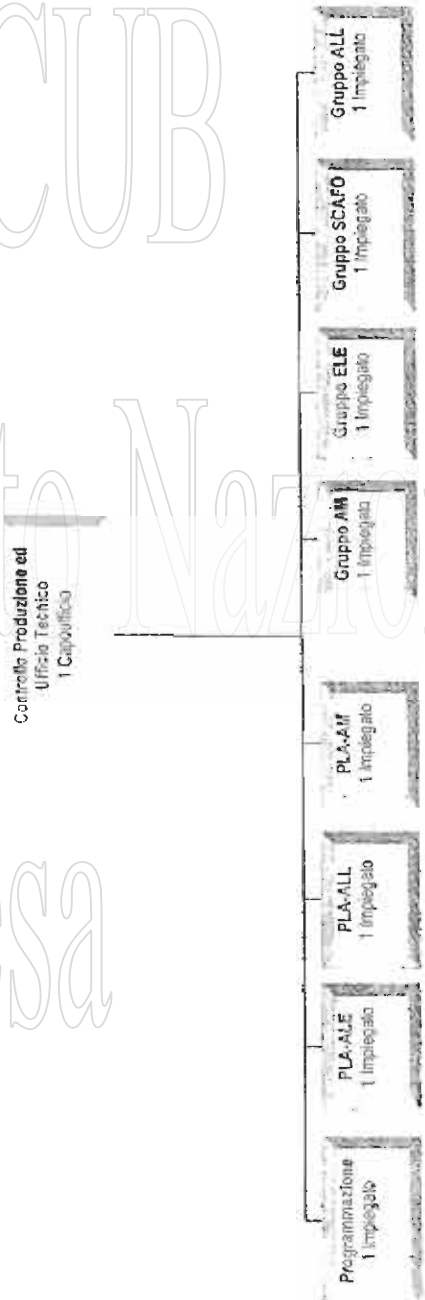
**Diretti: 130**  
**Indiretti: 56**



### MAGAZZINO



### CONTROLLO PRODUZIONE ED UFFICIO TECNICO

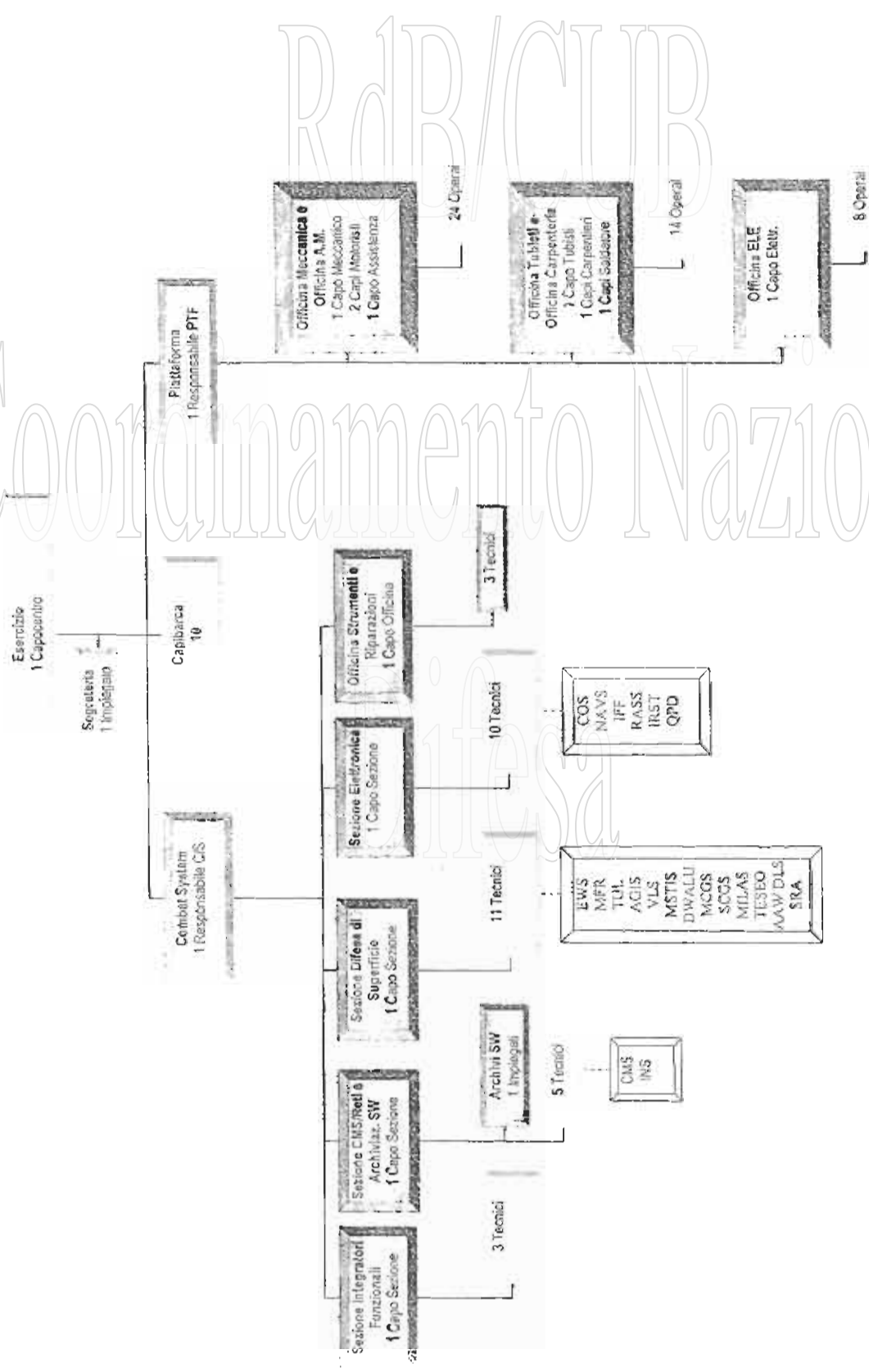


RdB/CUB

Difesa

Coordinamento Nazionale

# SEZIONE ESERCIZIO



3/4

ALE	Allestimento Elettrico
ALL	Allestimento
AM	Apparato Motore
ASS	Assistenza
COR	Coordinamento
ELE	Elettrico
FAM	Fuori Apparato Motore
PLA	Programmazione Lavori

# RdB/CUB

# Coordinamento Nazionale

# Difesa

RdB/CUB

Coordinamento Nazionale

Difesa

